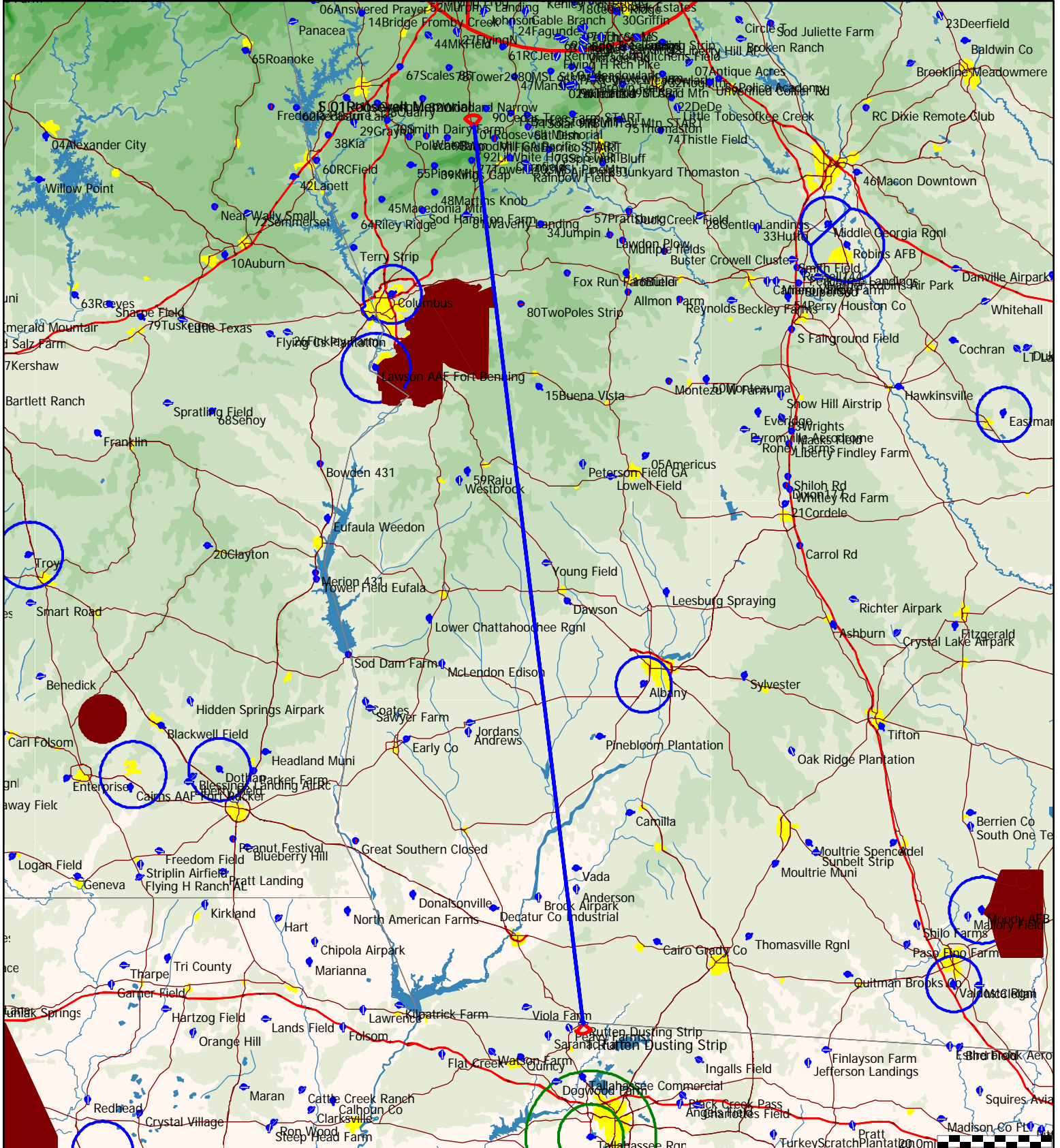




Type: Out and return [504.Opts]

Task distance: 313.2mi

Style	Code	Points	Latitude	Longitude	Dis.	Crs.
Take off	01Rosevl	01Roosevelt Memorial	N32°56'19"	W084°41'47"		
Start	01Rosevl	01Roosevelt Memorial	N32°56'19"	W084°41'47"		
1.Point	Rutten	Rutten Dusting Strip	N30°40'58"	W084°22'23"	156.6mi	173°
Finish	01Rosevl	01Roosevelt Memorial	N32°56'19"	W084°41'47"	156.6mi	353°
Landing	01Rosevl	01Roosevelt Memorial	N32°56'19"	W084°41'47"		

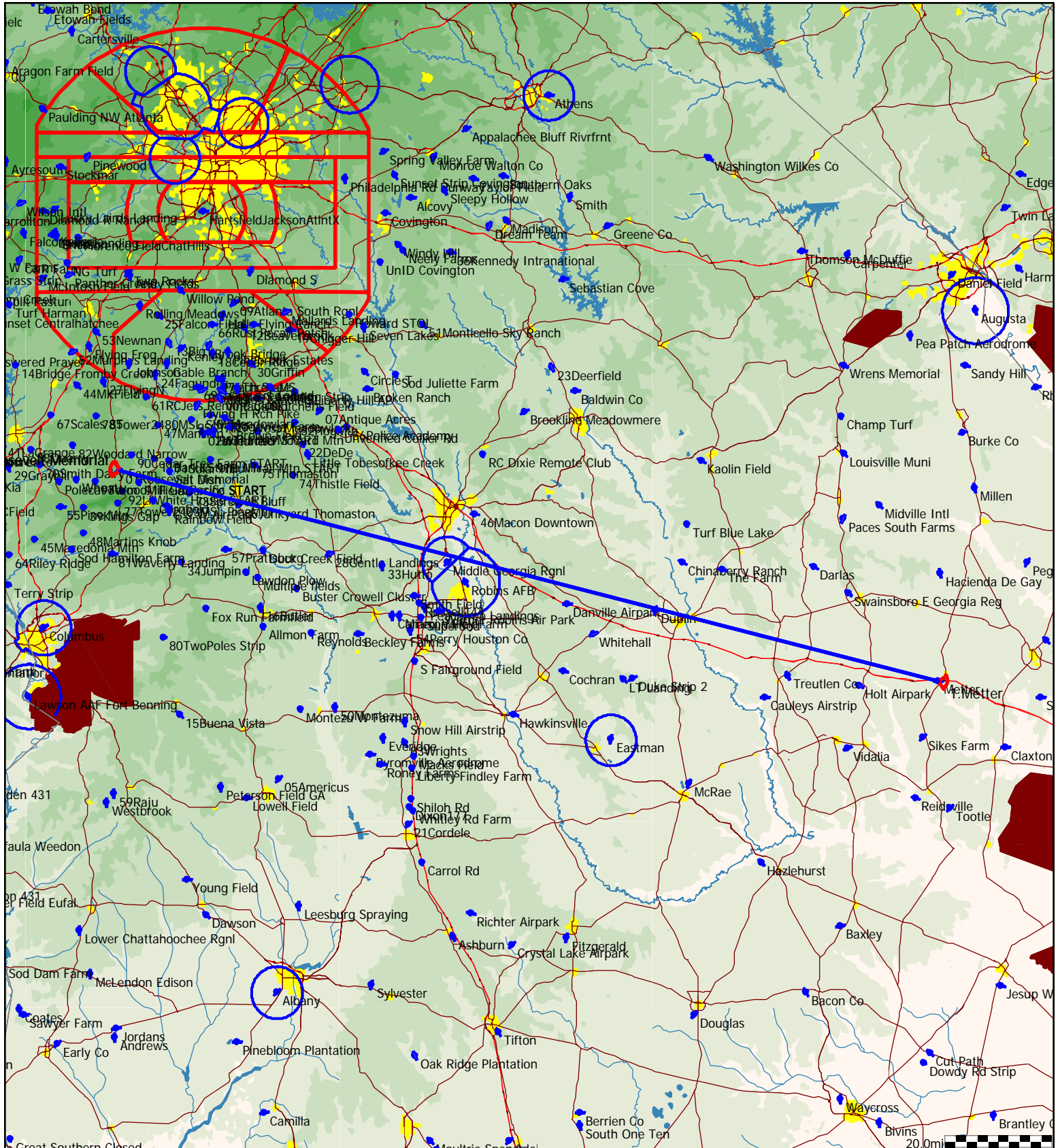




Type: Out and return [506.4pts]

Task distance: 314.6mi

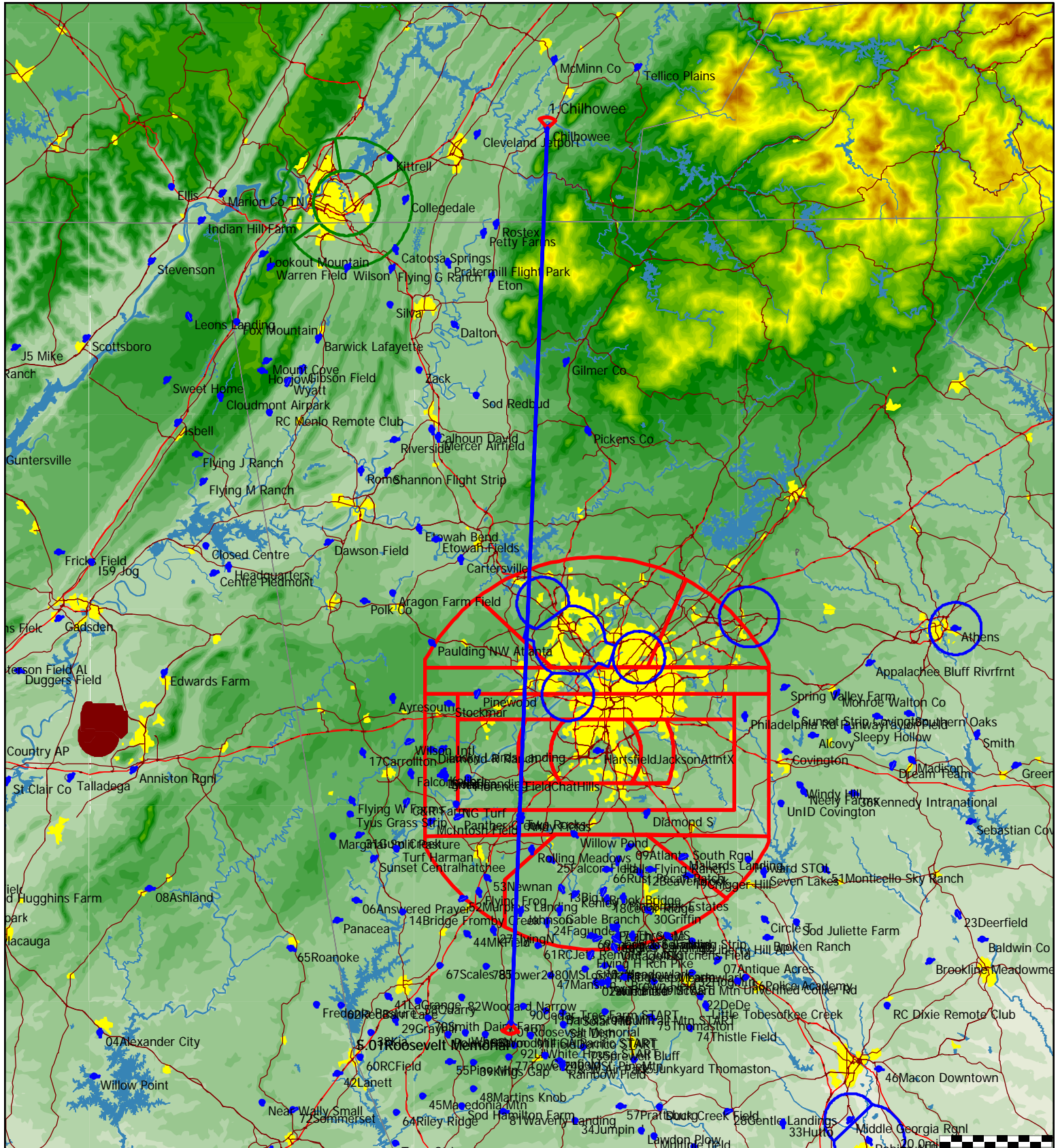
Style	Code	Points	Latitude	Longitude	Dis.	Crs.
Take off	01Rosevl	01Roosevelt Memorial	N32°56'19"	W084°41'47"		
Start	01Rosevl	01Roosevelt Memorial	N32°56'19"	W084°41'47"		
1.Point	Metter	Metter	N32°22'26"	W082°04'53"	157.3mi	104°
Finish	01Rosevl	01Roosevelt Memorial	N32°56'19"	W084°41'47"	157.3mi	285°
Landing	01Rosevl	01Roosevelt Memorial	N32°56'19"	W084°41'47"		



Type: Out and return [508.Opts]

Task distance: 315.6mi

Style	Code	Points	Latitude	Longitude	Dis.	Crs.
Take off	01Rosevl	01Roosevelt Memorial	N32°56'19"	W084°41'47"		
Start	01Rosevl	01Roosevelt Memorial	N32°56'19"	W084°41'47"		
1.Point	Chilhowe	Chilhowee	N35°13'35"	W084°35'06"	157.8mi	2°
Finish	01Rosevl	01Roosevelt Memorial	N32°56'19"	W084°41'47"	157.8mi	182°
Landing	01Rosevl	01Roosevelt Memorial	N32°56'19"	W084°41'47"		

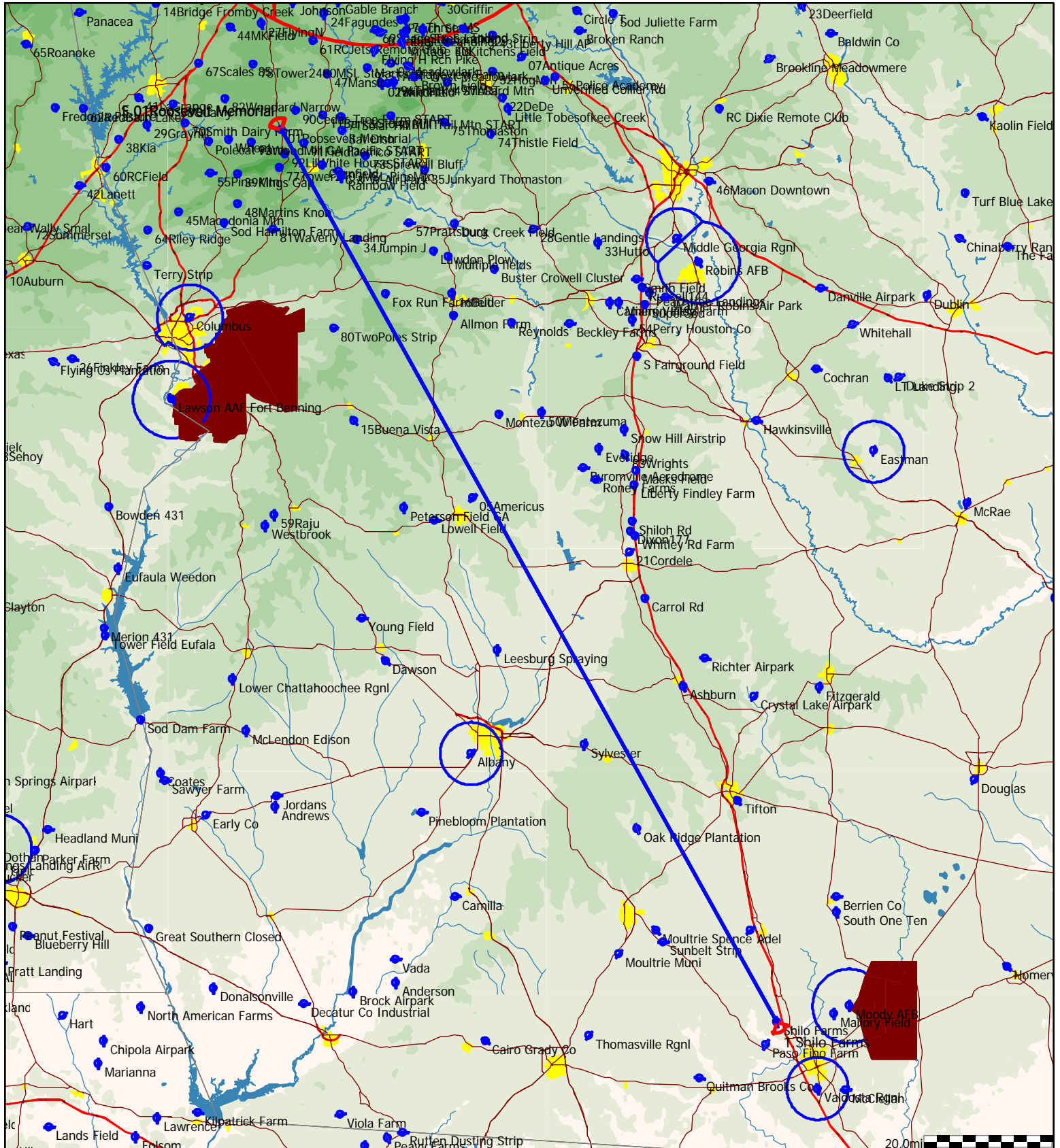




Type: Out and return [509.7pts]

Task distance: 316.7mi

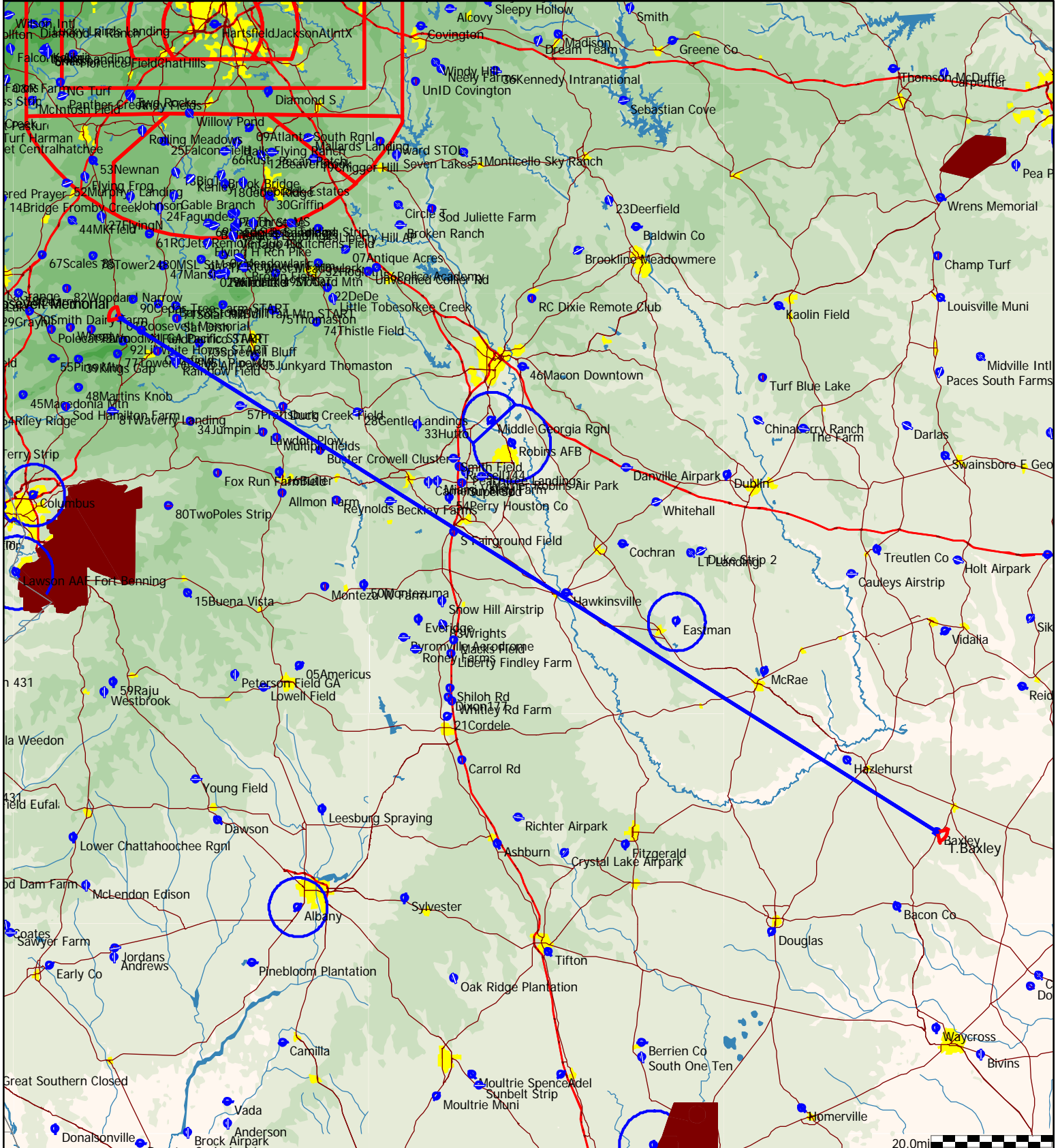
Style	Code	Points	Latitude	Longitude	Dis.	Crs.
Take off	01Rosevl	01Roosevelt Memorial	N32°56'19"	W084°41'47"		
Start	01Rosevl	01Roosevelt Memorial	N32°56'19"	W084°41'47"		
1.Point	Shilo	Shilo Farms	N30°55'52"	W083°23'01"	158.4mi	151°
Finish	01Rosevl	01Roosevelt Memorial	N32°56'19"	W084°41'47"	158.4mi	331°
Landing	01Rosevl	01Roosevelt Memorial	N32°56'19"	W084°41'47"		



Type: Out and return [511.6pts]

Task distance: 317.9mi

Style	Code	Points	Latitude	Longitude	Dis.	Crs.
Take off	01Rosevl	01Roosevelt Memorial	N32°56'19"	W084°41'47"		
Start	01Rosevl	01Roosevelt Memorial	N32°56'19"	W084°41'47"		
1.Point	Baxley	Baxley	N31°42'50"	W082°23'38"	159.0mi	121°
Finish	01Rosevl	01Roosevelt Memorial	N32°56'19"	W084°41'47"	159.0mi	303°
Landing	01Rosevl	01Roosevelt Memorial	N32°56'19"	W084°41'47"		

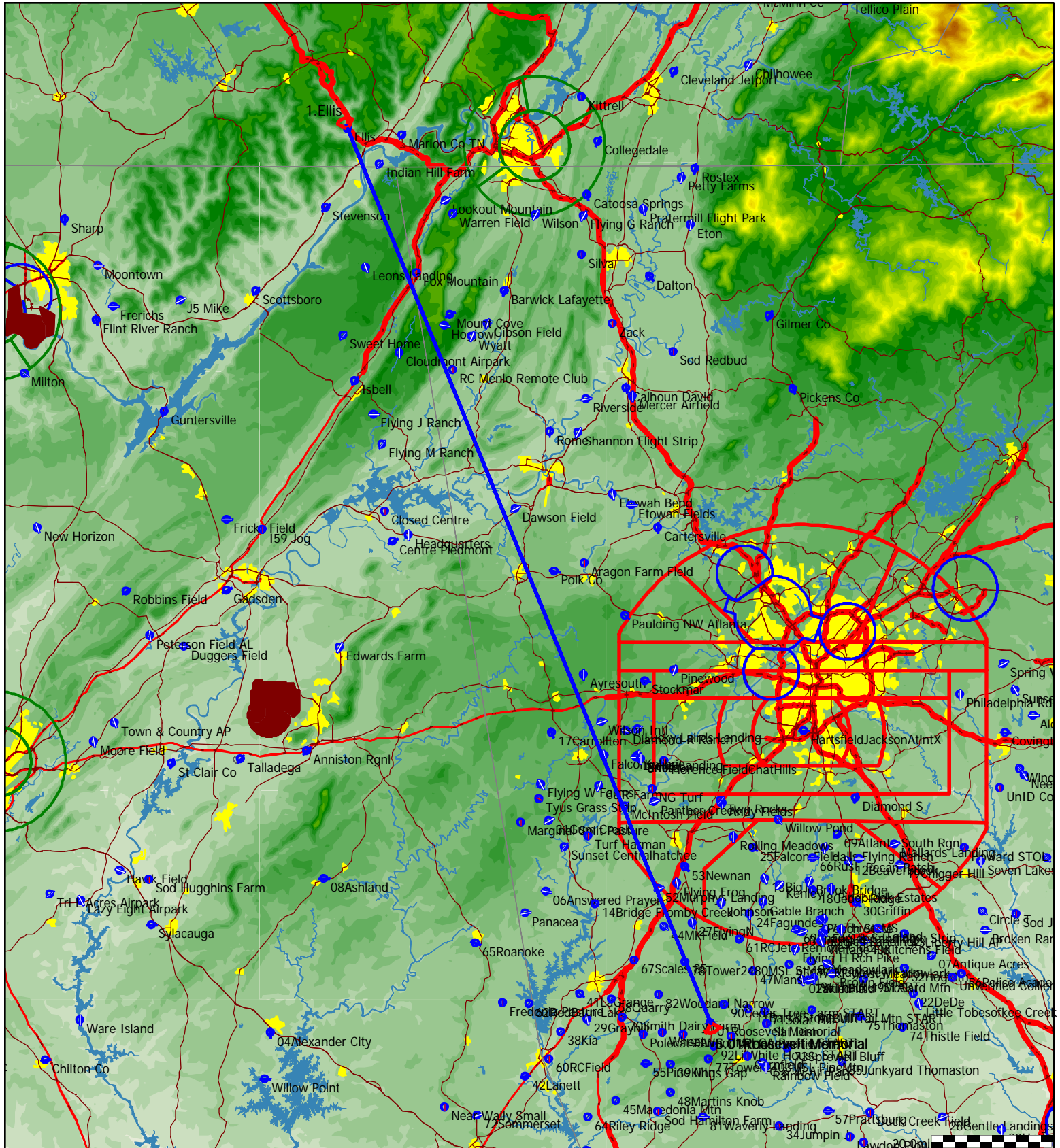




Type: Out and return [511.9pts]

Task distance: 318.1mi

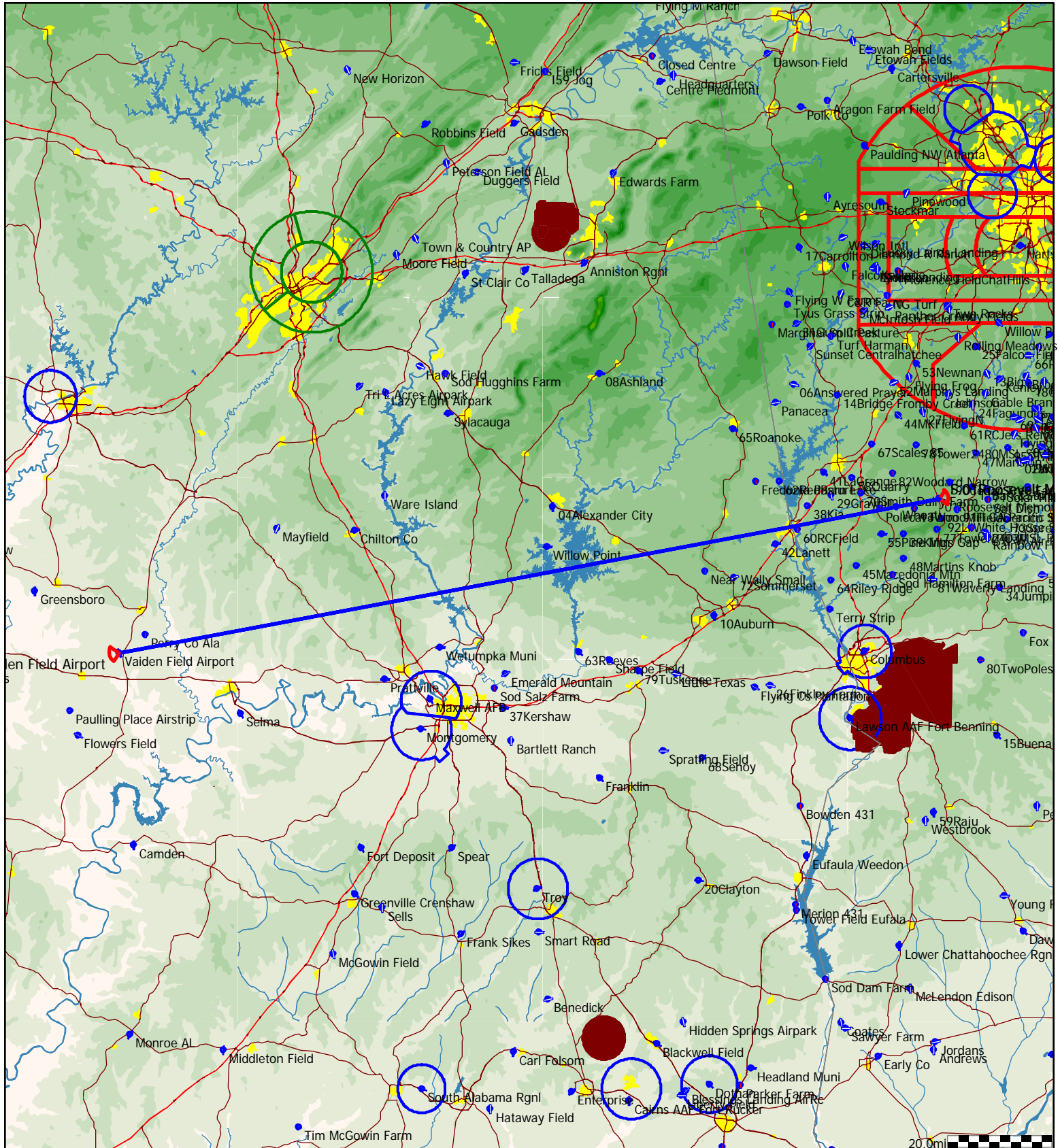
Style	Code	Points	Latitude	Longitude	Dis.	Crs.
Take off	01Rosevl	01Roosevelt Memorial	N32°56'19"	W084°41'47"		
Start	01Rosevl	01Roosevelt Memorial	N32°56'19"	W084°41'47"		
1.Point	ELLIS	Ellis	N35°04'33"	W085°44'26"	159.0mi	338°
Finish	01Rosevl	01Roosevelt Memorial	N32°56'19"	W084°41'47"	159.0mi	158°
Landing	01Rosevl	01Roosevelt Memorial	N32°56'19"	W084°41'47"		



Type: Out and return [512.9pts]

Task distance: 318.7mi

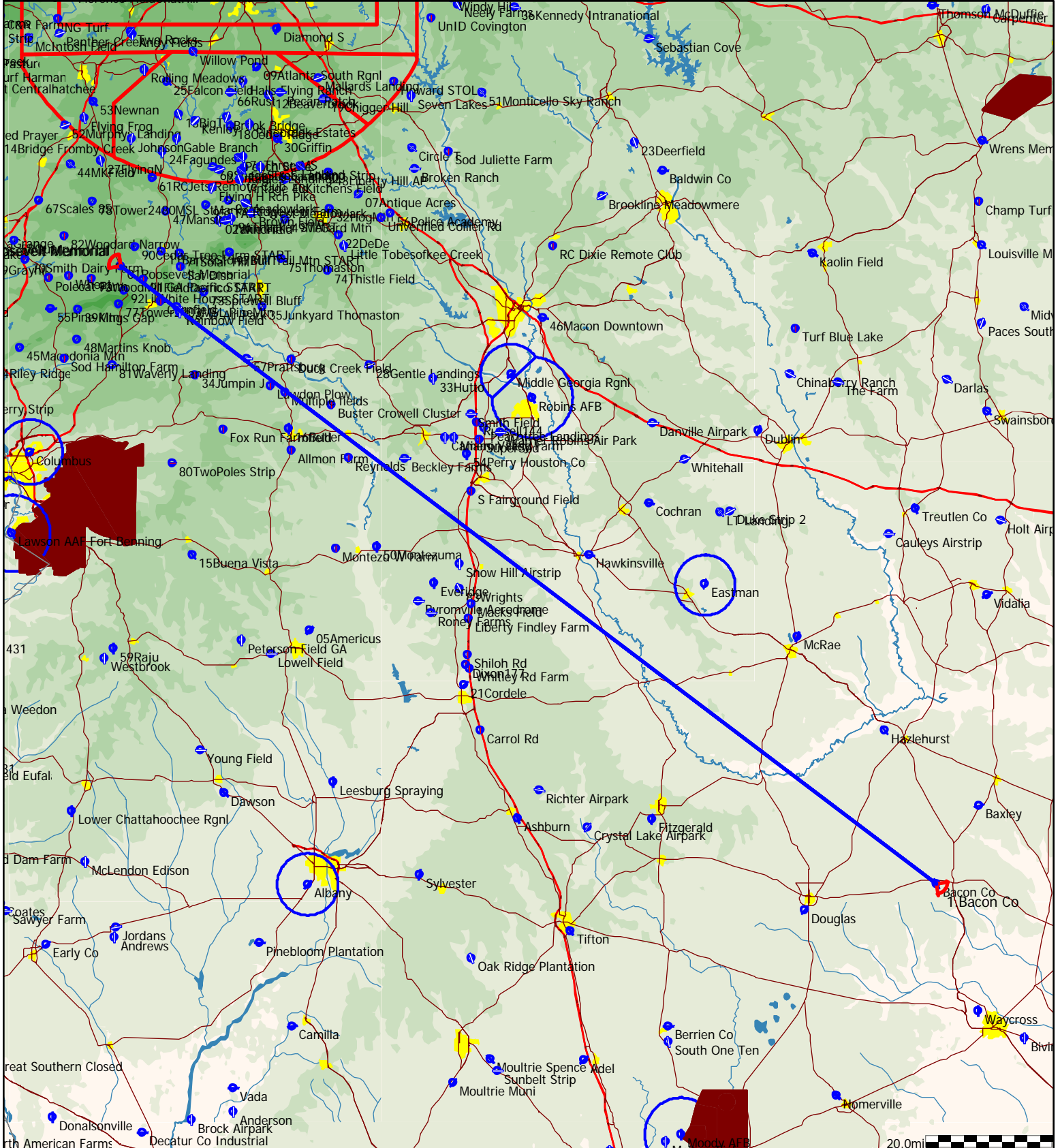
Style	Code	Points	Latitude	Longitude	Dis.	Crs.
Take off	01Rosevl	01Roosevelt Memorial	N32°56'19"	W084°41'47"		
Start	01Rosevl	01Roosevelt Memorial	N32°56'19"	W084°41'47"		
1.Point	Vaiden	Vaiden Field Airport	N32°30'38"	W087°23'05"	159.3mi	260°
Finish	01Rosevl	01Roosevelt Memorial	N32°56'19"	W084°41'47"	159.3mi	79°
Landing	01Rosevl	01Roosevelt Memorial	N32°56'19"	W084°41'47"		



Type: Out and return [516.8pts]

Task distance: 321.1mi

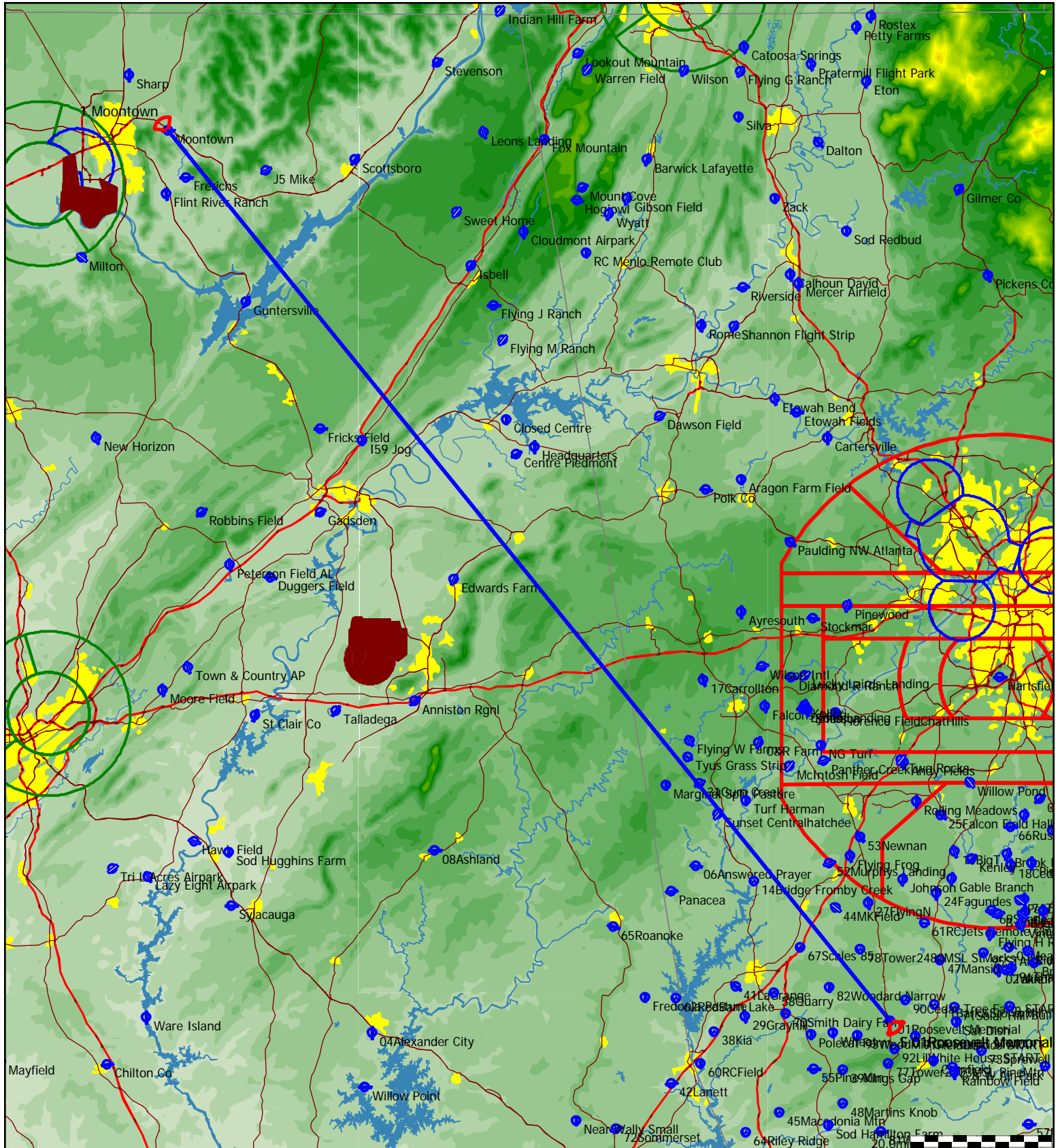
Style	Code	Points	Latitude	Longitude	Dis.	Crs.
Take off	01Rosevl	01Roosevelt Memorial	N32°56'19"	W084°41'47"		
Start	01Rosevl	01Roosevelt Memorial	N32°56'19"	W084°41'47"		
1.Point	Bacon	Bacon Co	N31°32'10"	W082°30'24"	160.6mi	126°
Finish	01Rosevl	01Roosevelt Memorial	N32°56'19"	W084°41'47"	160.6mi	308°
Landing	01Rosevl	01Roosevelt Memorial	N32°56'19"	W084°41'47"		



Type: Out and return [517.4pts]

Task distance: 321.5mi

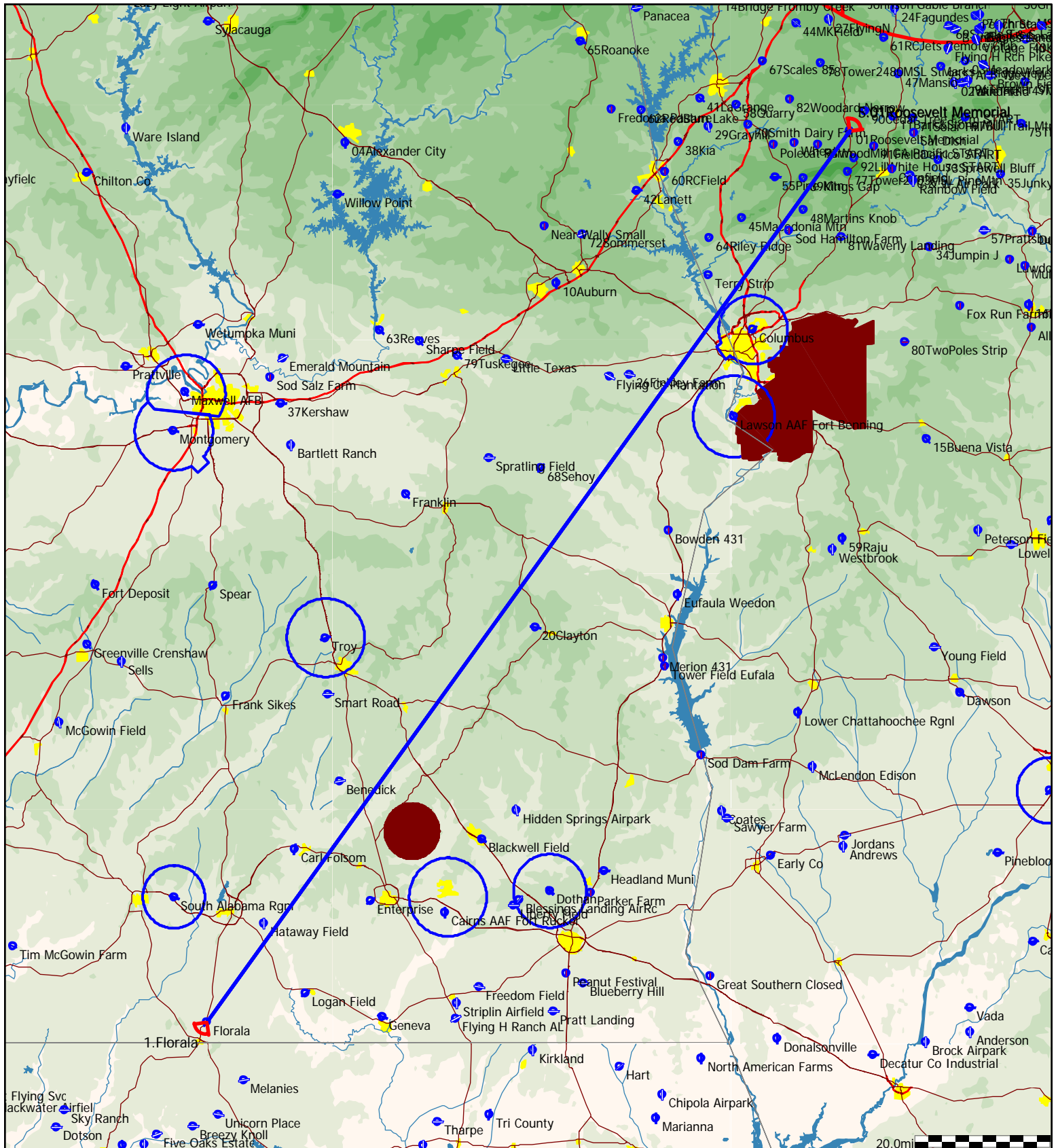
Style	Code	Points	Latitude	Longitude	Dis.	Crs.
Take off	01Rosevl	01Roosevelt Memorial	N32°56'19"	W084°41'47"		
Start	01Rosevl	01Roosevelt Memorial	N32°56'19"	W084°41'47"		
1.Point	Moontn	Moontown	N34°44'51"	W086°27'39"	160.7mi	321°
Finish	01Rosevl	01Roosevelt Memorial	N32°56'19"	W084°41'47"	160.7mi	140°
Landing	01Rosevl	01Roosevelt Memorial	N32°56'19"	W084°41'47"		



Type: Out and return [519.6pts]

Task distance: 322.9mi

Style	Code	Points	Latitude	Longitude	Dis.	Crs.
Take off	01Rosevl	01Roosevelt Memorial	N32°56'19"	W084°41'47"		
Start	01Rosevl	01Roosevelt Memorial	N32°56'19"	W084°41'47"		
1.Point	Floral	Floral	N31°02'33"	W086°18'42"	161.4mi	216°
Finish	01Rosevl	01Roosevelt Memorial	N32°56'19"	W084°41'47"	161.4mi	36°
Landing	01Rosevl	01Roosevelt Memorial	N32°56'19"	W084°41'47"		

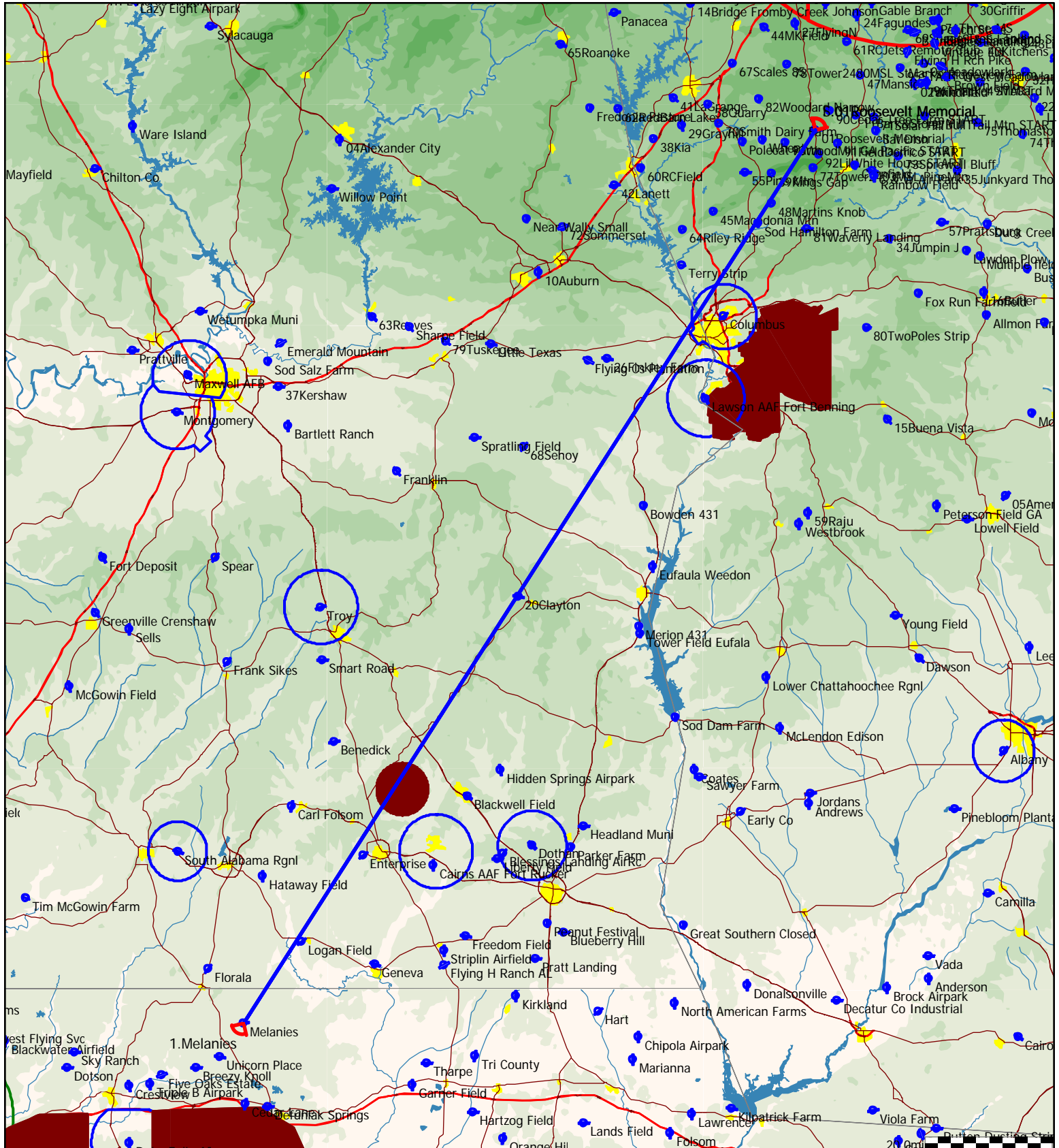


Type: Out and return [532.4pts]

HC.94=532.0

Task distance: 330.8mi

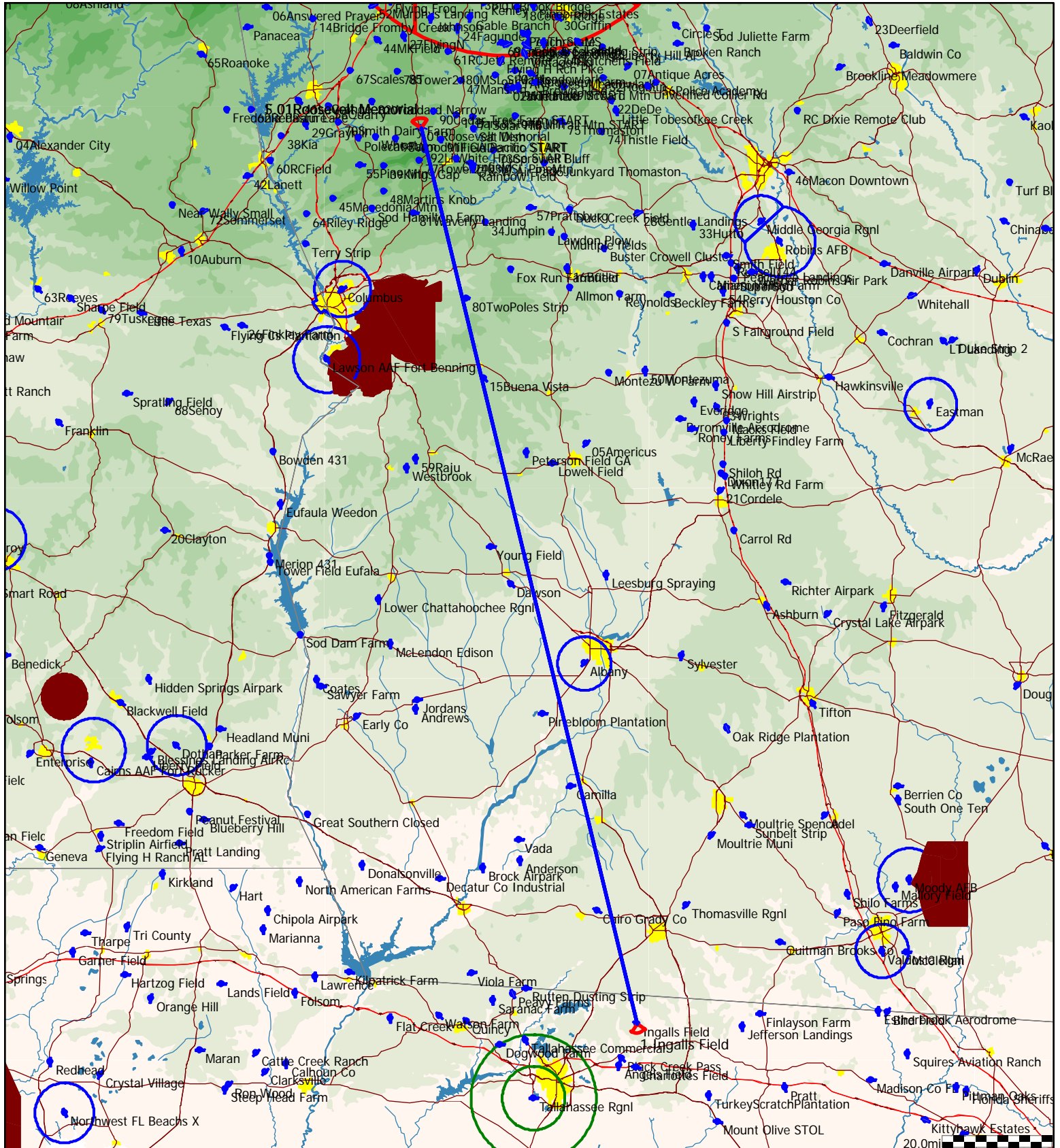
Style	Code	Points	Latitude	Longitude	Dis.	Crs.
Take off	01Rosevl	01Roosevelt Memorial	N32°56'19"	W084°41'47"		
Start	01Rosevl	01Roosevelt Memorial	N32°56'19"	W084°41'47"		
1.Point	Melanies	Melanies	N30°55'08"	W086°13'06"	165.4mi	213°
Finish	01Rosevl	01Roosevelt Memorial	N32°56'19"	W084°41'47"	165.4mi	32°
Landing	01Rosevl	01Roosevelt Memorial	N32°56'19"	W084°41'47"		



Type: Out and return [535.8pts]

Task distance: 332.9mi

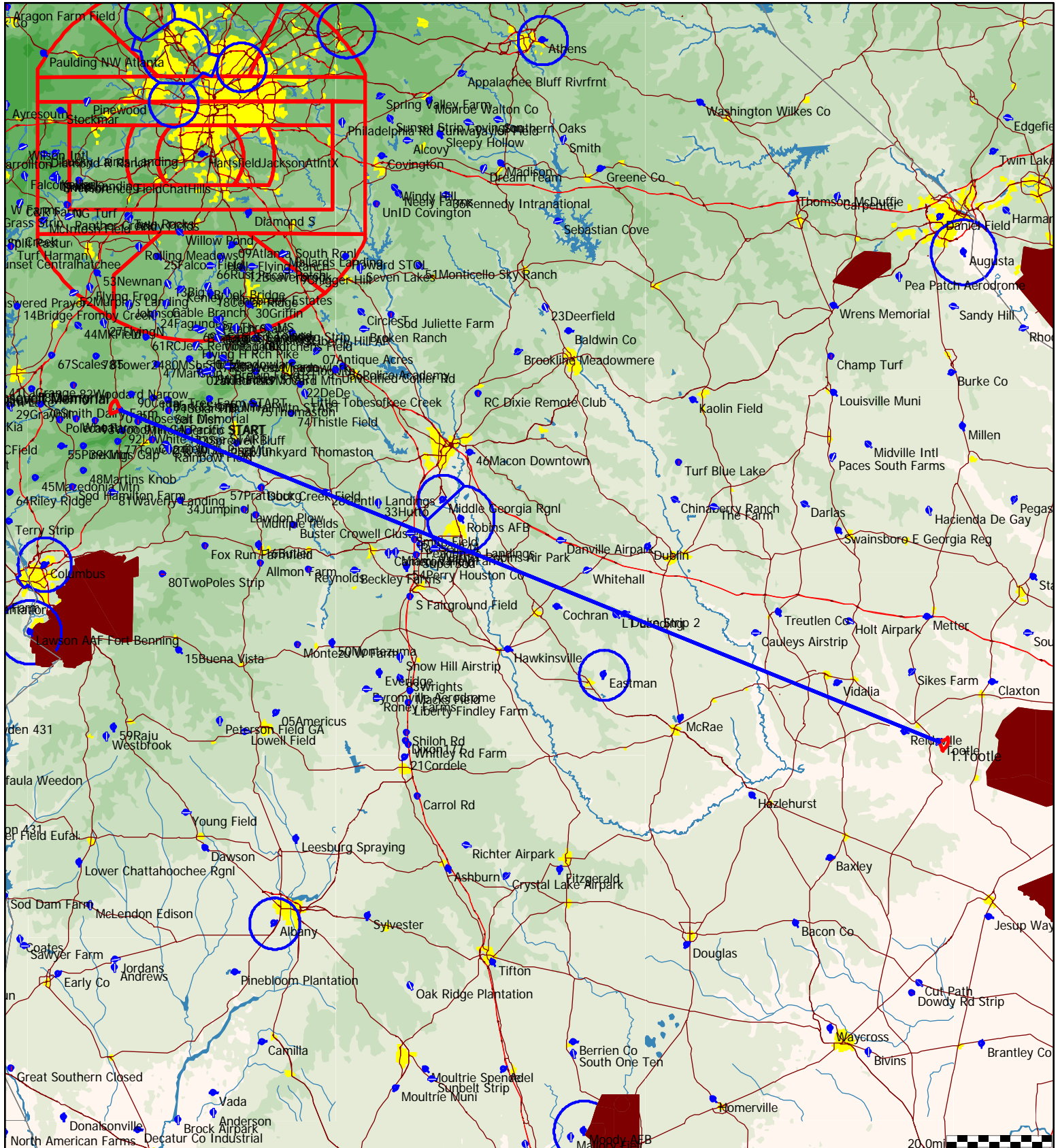
Style	Code	Points	Latitude	Longitude	Dis.	Crs.
Take off	01Rosevl	01Roosevelt Memorial	N32°56'19"	W084°41'47"		
Start	01Rosevl	01Roosevelt Memorial	N32°56'19"	W084°41'47"		
1.Point	Ingalls	Ingalls Field	N30°35'26"	W084°01'50"	166.5mi	166°
Finish	01Rosevl	01Roosevelt Memorial	N32°56'19"	W084°41'47"	166.5mi	347°
Landing	01Rosevl	01Roosevelt Memorial	N32°56'19"	W084°41'47"		



Type: Out and return [537.6pts]

Task distance: 334.0mi

Style	Code	Points	Latitude	Longitude	Dis.	Crs.
Take off	01Rosevl	01Roosevelt Memorial	N32°56'19"	W084°41'47"		
Start	01Rosevl	01Roosevelt Memorial	N32°56'19"	W084°41'47"		
1.Point	Tootle	Tootle	N32°01'56"	W082°02'39"	167.0mi	111°
Finish	01Rosevl	01Roosevelt Memorial	N32°56'19"	W084°41'47"	167.0mi	293°
Landing	01Rosevl	01Roosevelt Memorial	N32°56'19"	W084°41'47"		

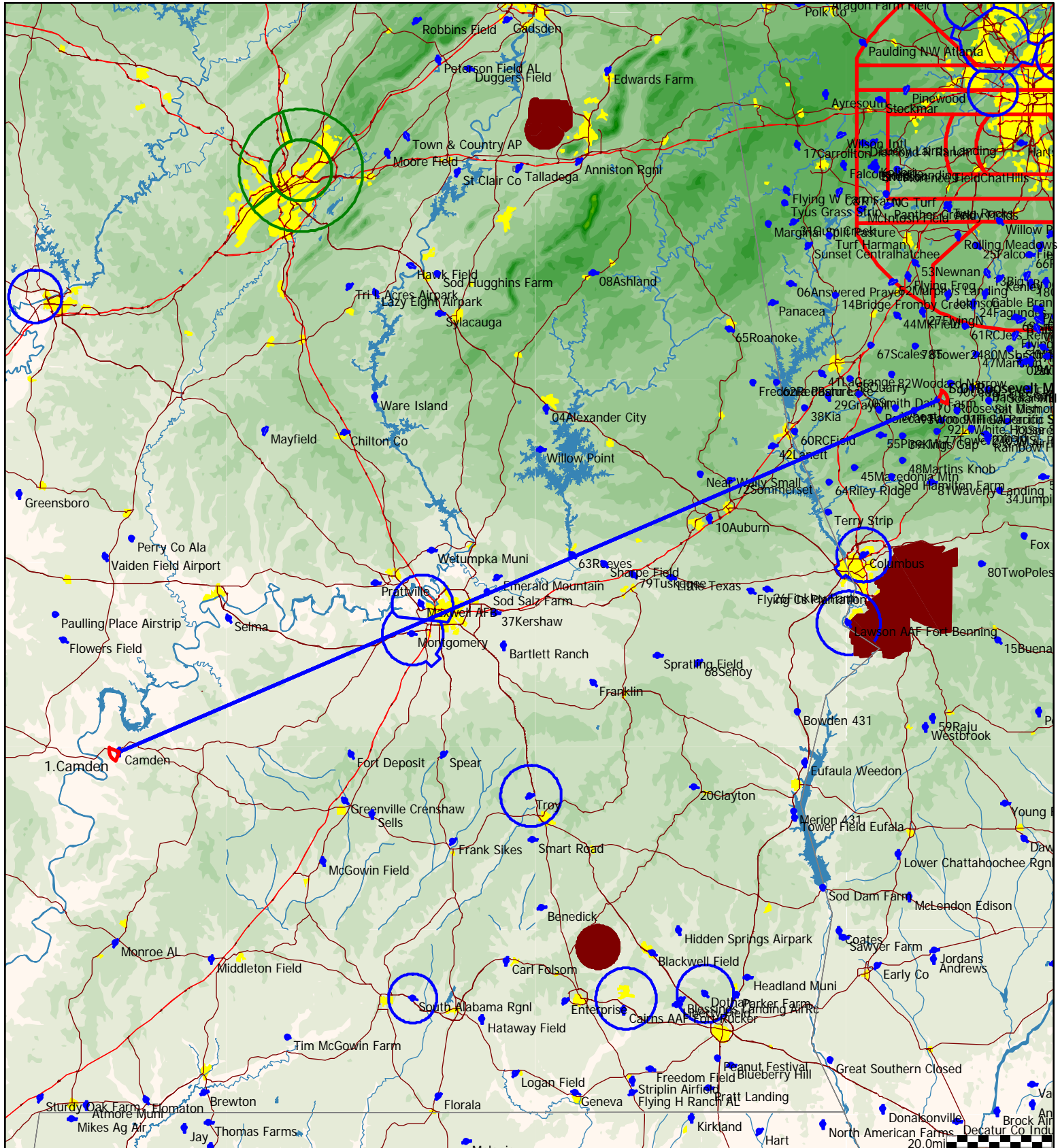




Type: Out and return [540.5pts]

Task distance: 335.9mi

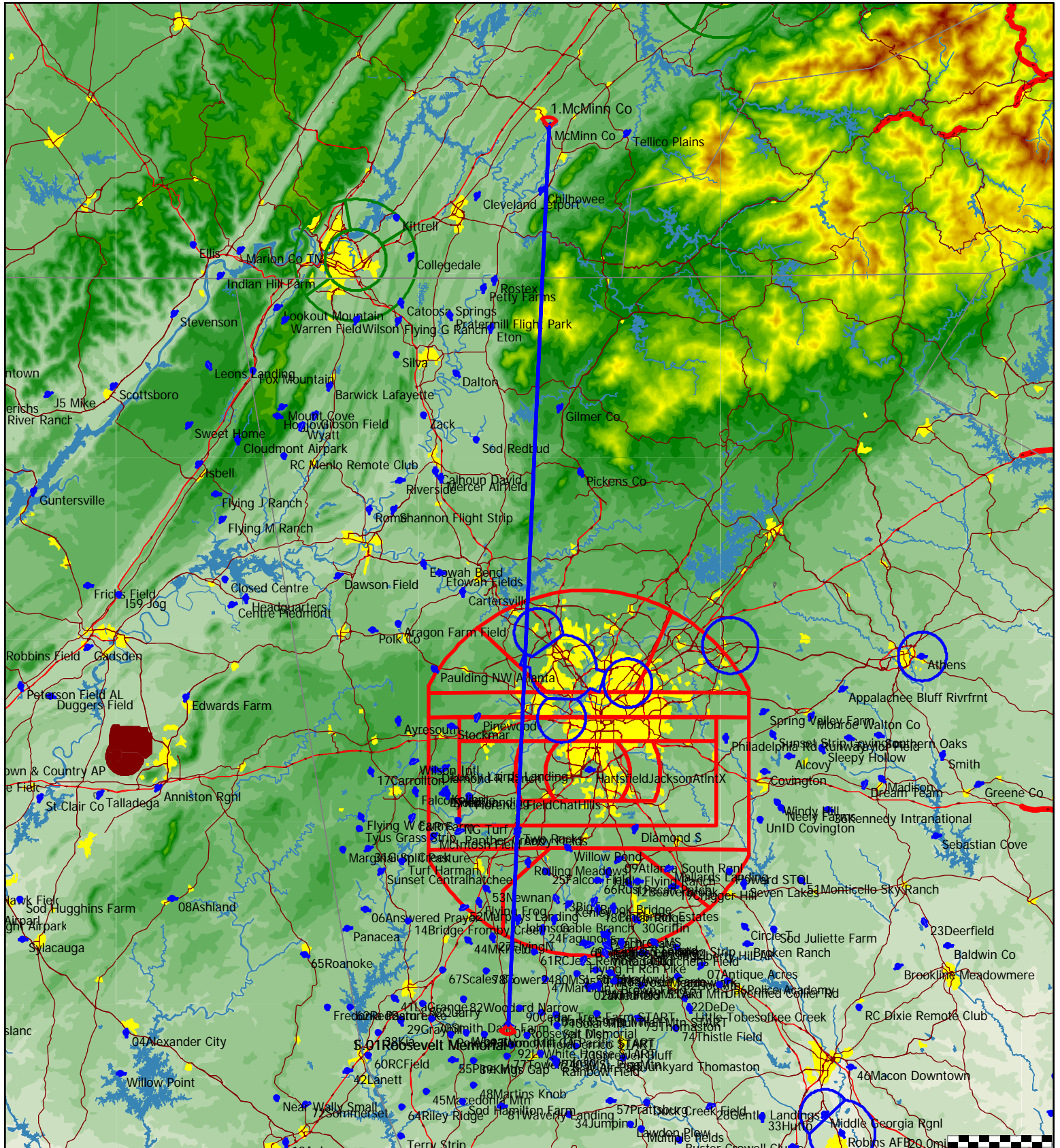
Style	Code	Points	Latitude	Longitude	Dis.	Crs.
Take off	01Rosevl	01Roosevelt Memorial	N32°56'19"	W084°41'47"		
Start	01Rosevl	01Roosevelt Memorial	N32°56'19"	W084°41'47"		
1.Point	Camden	Camden	N31°58'47"	W087°20'21"	167.9mi	248°
Finish	01Rosevl	01Roosevelt Memorial	N32°56'19"	W084°41'47"	167.9mi	66°
Landing	01Rosevl	01Roosevelt Memorial	N32°56'19"	W084°41'47"		



Type: Out and return [546.4pts]

Task distance: 339.5mi

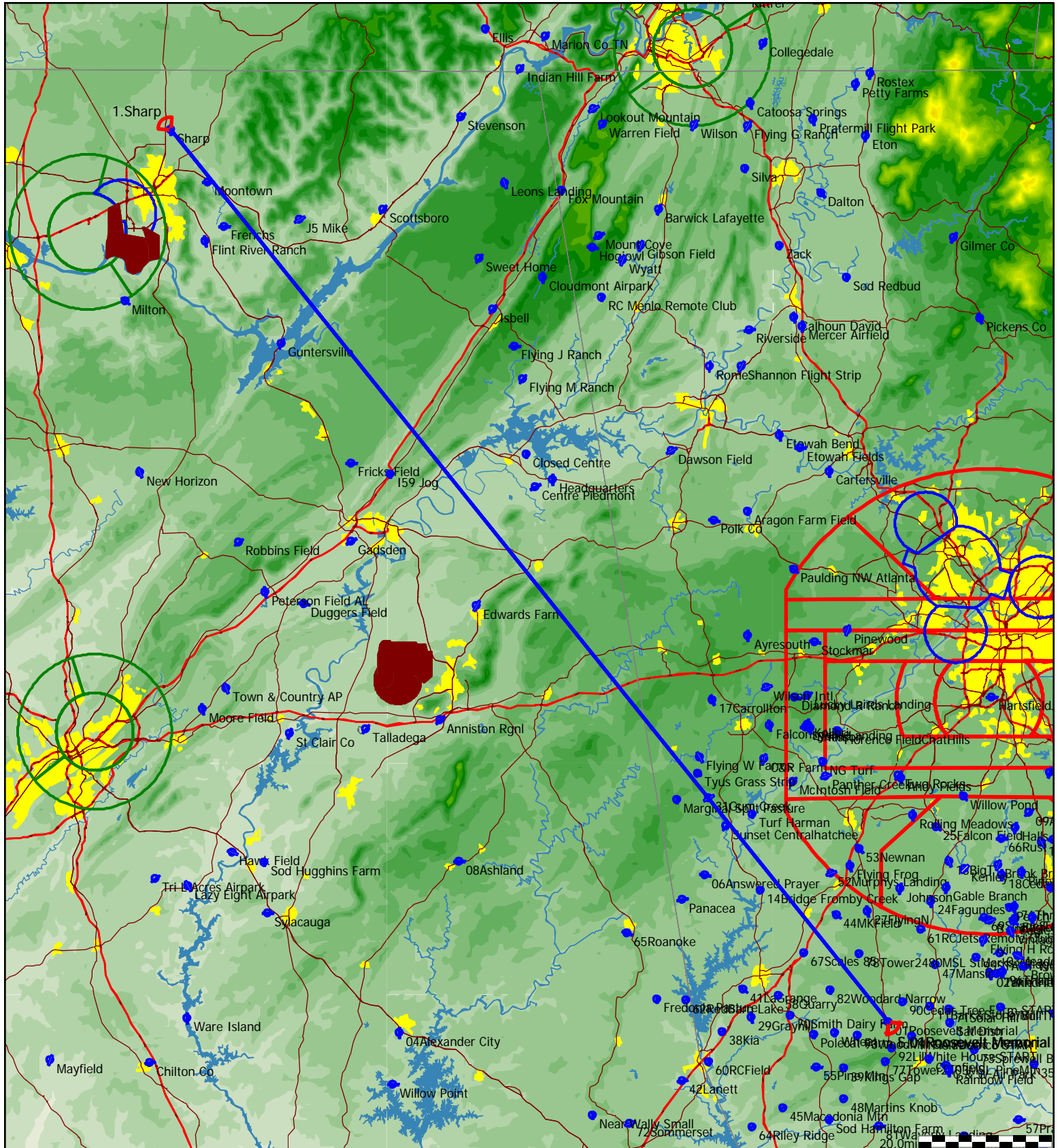
Style	Code	Points	Latitude	Longitude	Dis.	Crs.
Take off	01Rosevl	01Roosevelt Memorial	N32°56'19"	W084°41'47"		
Start	01Rosevl	01Roosevelt Memorial	N32°56'19"	W084°41'47"		
1.Point	McMinn	McMinn Co	N35°23'57"	W084°33'42"	169.8mi	3°
Finish	01Rosevl	01Roosevelt Memorial	N32°56'19"	W084°41'47"	169.8mi	183°
Landing	01Rosevl	01Roosevelt Memorial	N32°56'19"	W084°41'47"		



Type: Out and return [547.8pts]

Task distance: 340.4mi

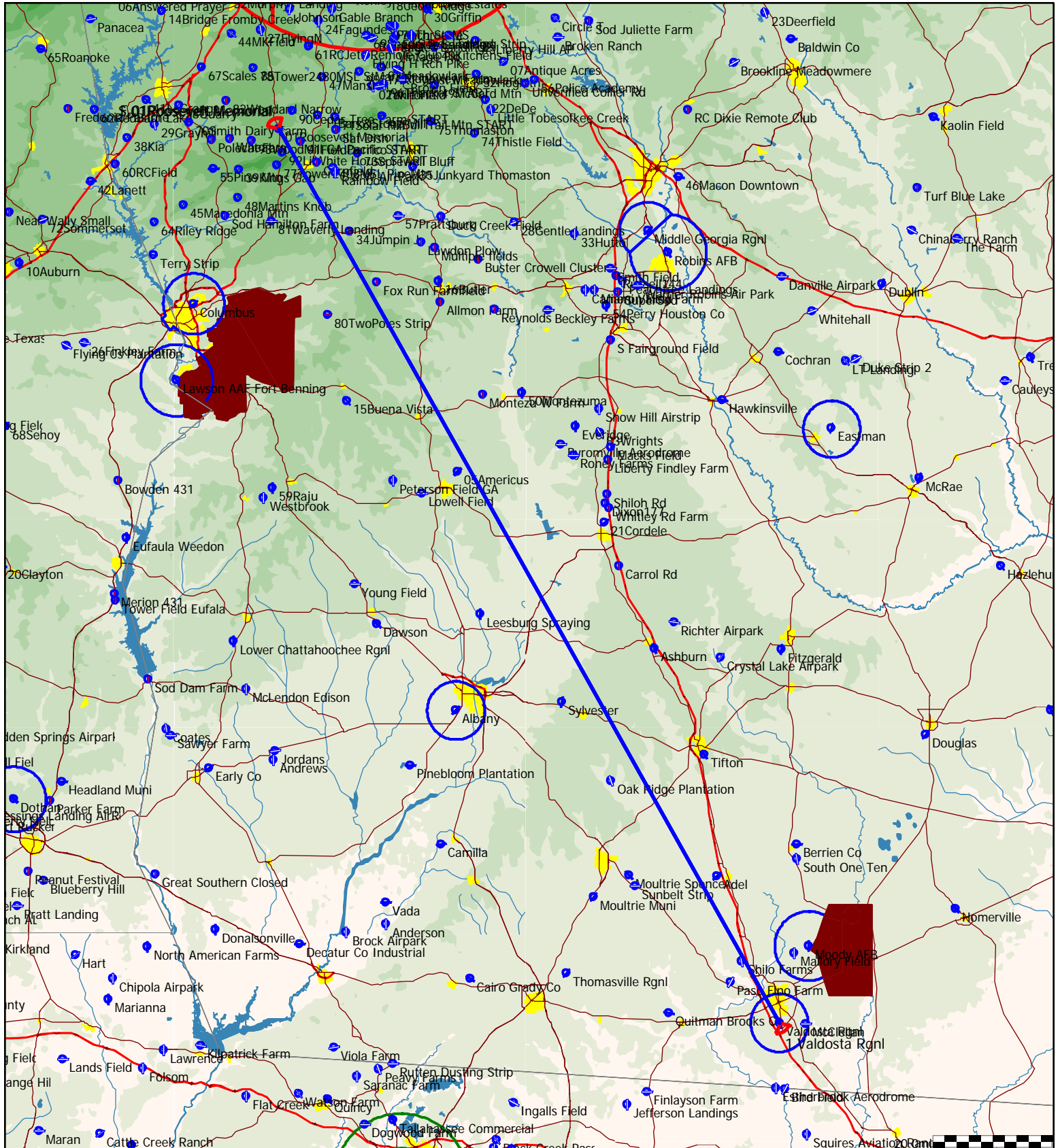
Style	Code	Points	Latitude	Longitude	Dis.	Crs.
Take off	01Rosevl	01Roosevelt Memorial	N32°56'19"	W084°41'47"		
Start	01Rosevl	01Roosevelt Memorial	N32°56'19"	W084°41'47"		
1.Point	Sharp	Sharp	N34°51'34"	W086°33'27"	170.2mi	322°
Finish	01Rosevl	01Roosevelt Memorial	N32°56'19"	W084°41'47"	170.2mi	141°
Landing	01Rosevl	01Roosevelt Memorial	N32°56'19"	W084°41'47"		



Type: Out and return [548.7pts]

Task distance: 341.0mi

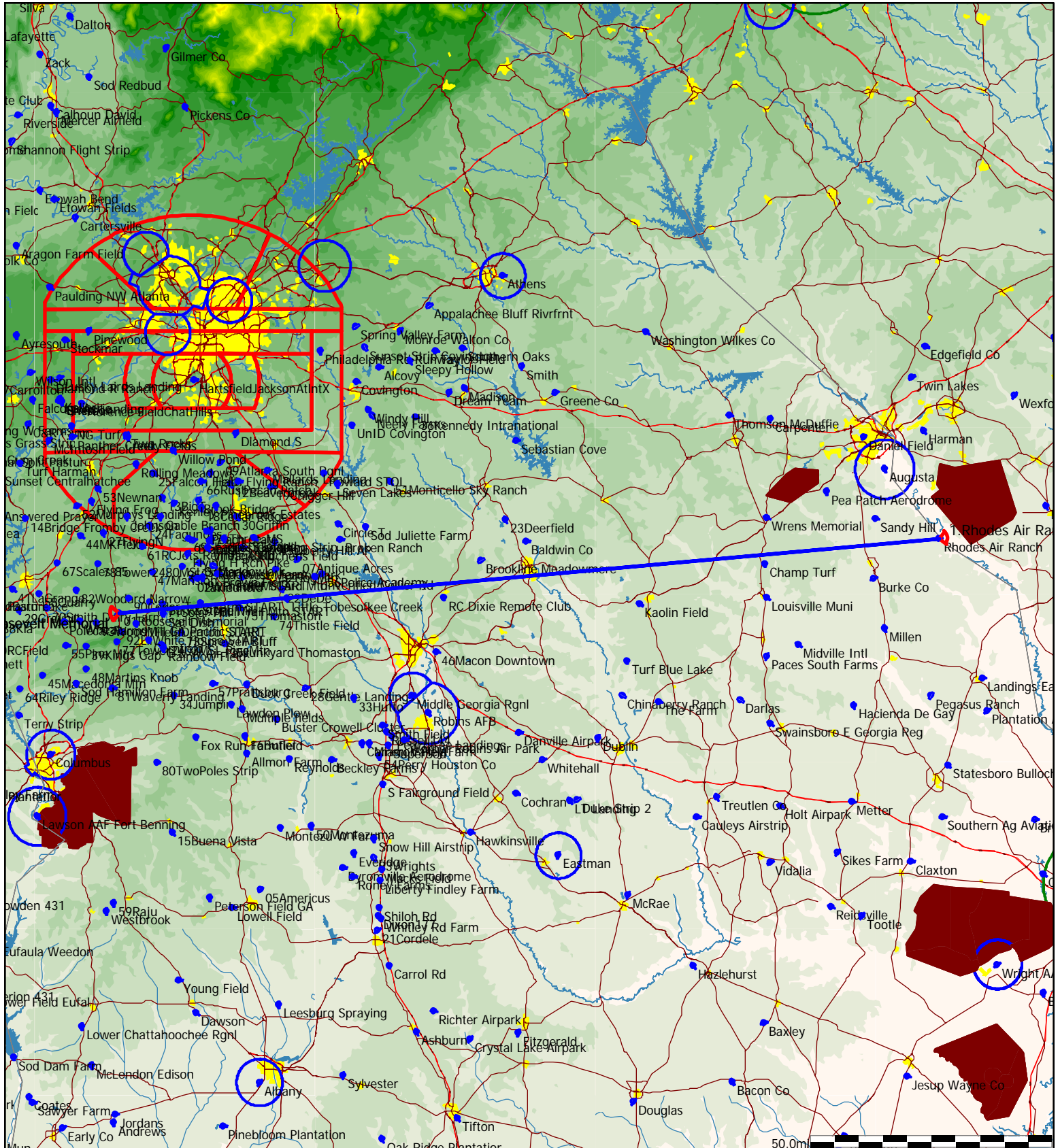
Style	Code	Points	Latitude	Longitude	Dis.	Crs.
Take off	01Rosevl	01Roosevelt Memorial	N32°56'19"	W084°41'47"		
Start	01Rosevl	01Roosevelt Memorial	N32°56'19"	W084°41'47"		
1.Point	Valdosta	Valdosta Rgnl	N30°46'53"	W083°16'34"	170.5mi	150°
Finish	01Rosevl	01Roosevelt Memorial	N32°56'19"	W084°41'47"	170.5mi	331°
Landing	01Rosevl	01Roosevelt Memorial	N32°56'19"	W084°41'47"		



Type: Out and return [549.2pts]

Task distance: 341.3mi

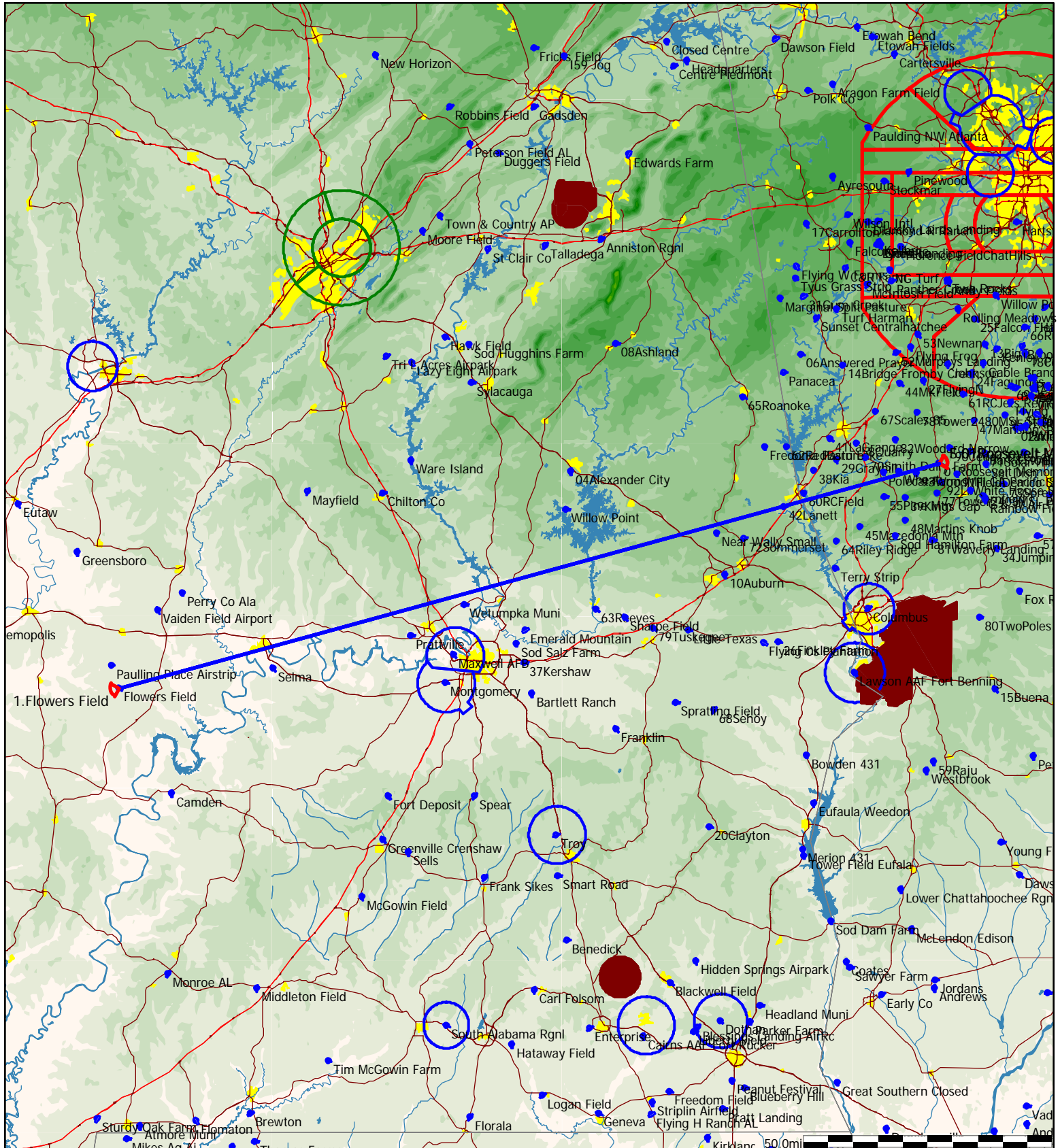
Style	Code	Points	Latitude	Longitude	Dis.	Crs.
Take off	01Rosevl	01Roosevelt Memorial	N32°56'19"	W084°41'47"		
Start	01Rosevl	01Roosevelt Memorial	N32°56'19"	W084°41'47"		
1.Point	Rhodes	Rhodes Air Ranch	N33°09'45"	W081°46'06"	170.6mi	84°
Finish	01Rosevl	01Roosevelt Memorial	N32°56'19"	W084°41'47"	170.6mi	266°
Landing	01Rosevl	01Roosevelt Memorial	N32°56'19"	W084°41'47"		



Type: Out and return [549.5pts]

Task distance: 341.4mi

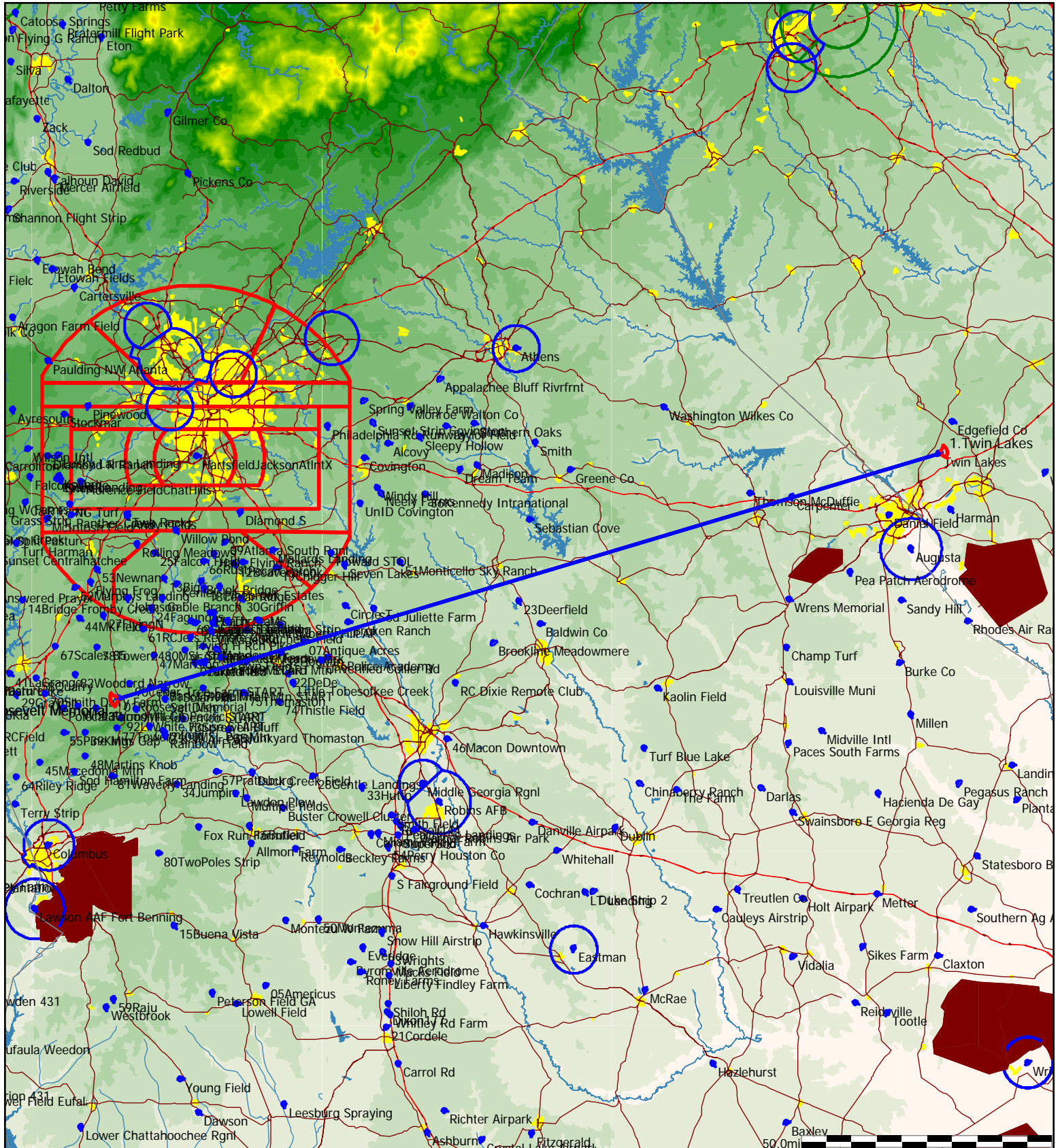
Style	Code	Points	Latitude	Longitude	Dis.	Crs.
Take off	01Rosevl	01Roosevelt Memorial	N32°56'19"	W084°41'47"		
Start	01Rosevl	01Roosevelt Memorial	N32°56'19"	W084°41'47"		
1.Point	FlowersF	Flowers Field	N32°17'06"	W087°31'12"	170.7mi	255°
Finish	01Rosevl	01Roosevelt Memorial	N32°56'19"	W084°41'47"	170.7mi	74°
Landing	01Rosevl	01Roosevelt Memorial	N32°56'19"	W084°41'47"		



Type: Out and return [549.9pts]

Task distance: 341.7mi

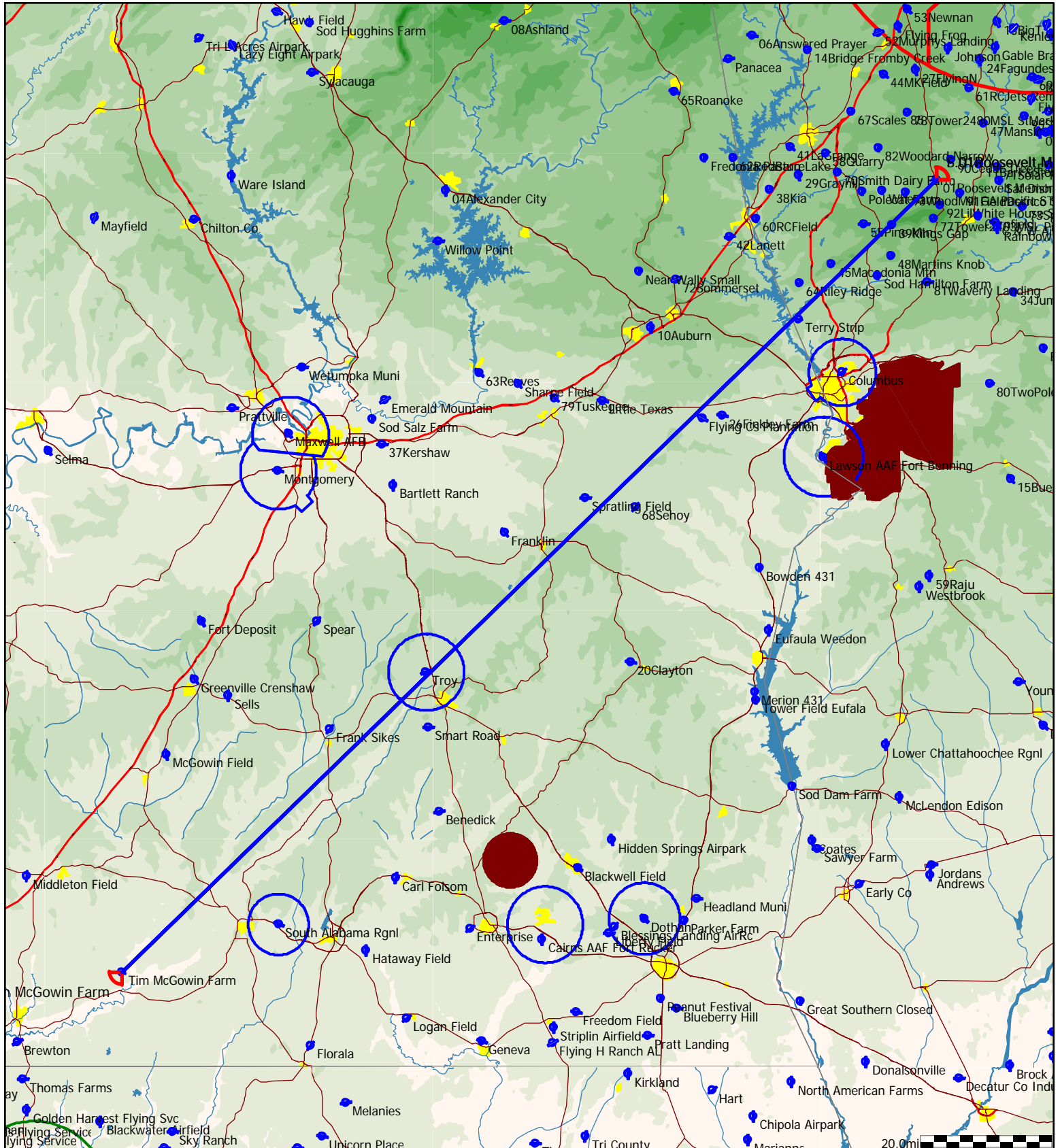
Style	Code	Points	Latitude	Longitude	Dis.	Crs.
Take off	01Rosevl	01Roosevelt Memorial	N32°56'19"	W084°41'47"		
Start	01Rosevl	01Roosevelt Memorial	N32°56'19"	W084°41'47"		
1.Point	TwinLk	Twin Lakes	N33°38'44"	W081°52'01"	170.8mi	73°
Finish	01Rosevl	01Roosevelt Memorial	N32°56'19"	W084°41'47"	170.8mi	254°
Landing	01Rosevl	01Roosevelt Memorial	N32°56'19"	W084°41'47"		



Type: Out and return [552.7pts]

Task distance: 343.4mi

Style	Code	Points	Latitude	Longitude	Dis.	Crs.
Take off	01Rosevl	01Roosevelt Memorial	N32°56'19"	W084°41'47"		
Start	01Rosevl	01Roosevelt Memorial	N32°56'19"	W084°41'47"		
1.Point	TimMcG	Tim McGowin Farm	N31°12'12"	W086°47'51"	171.7mi	226°
Finish	01Rosevl	01Roosevelt Memorial	N32°56'19"	W084°41'47"	171.7mi	45°
Landing	01Rosevl	01Roosevelt Memorial	N32°56'19"	W084°41'47"		

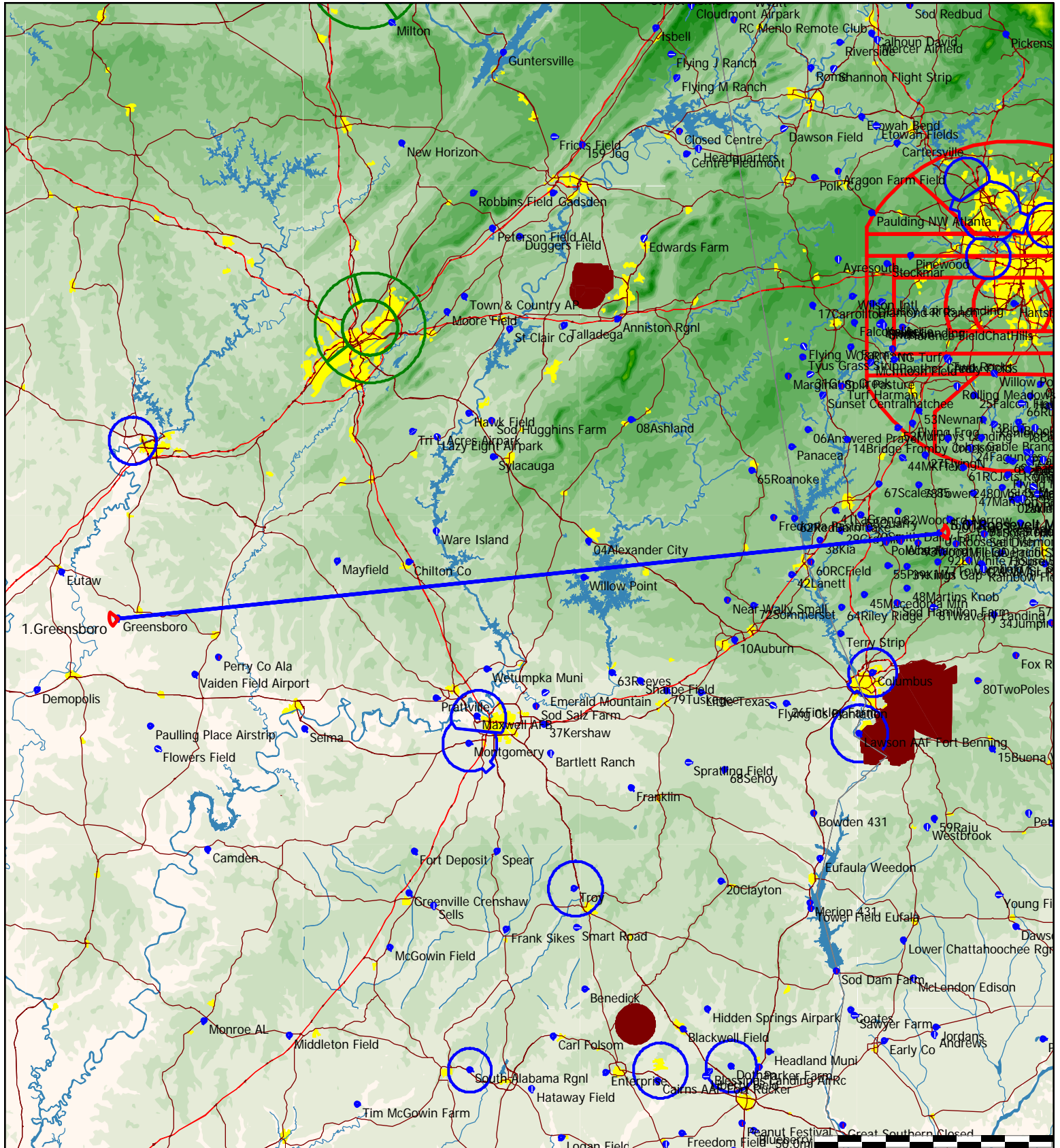




Type: Out and return [558.4pts]

Task distance: 347.0mi

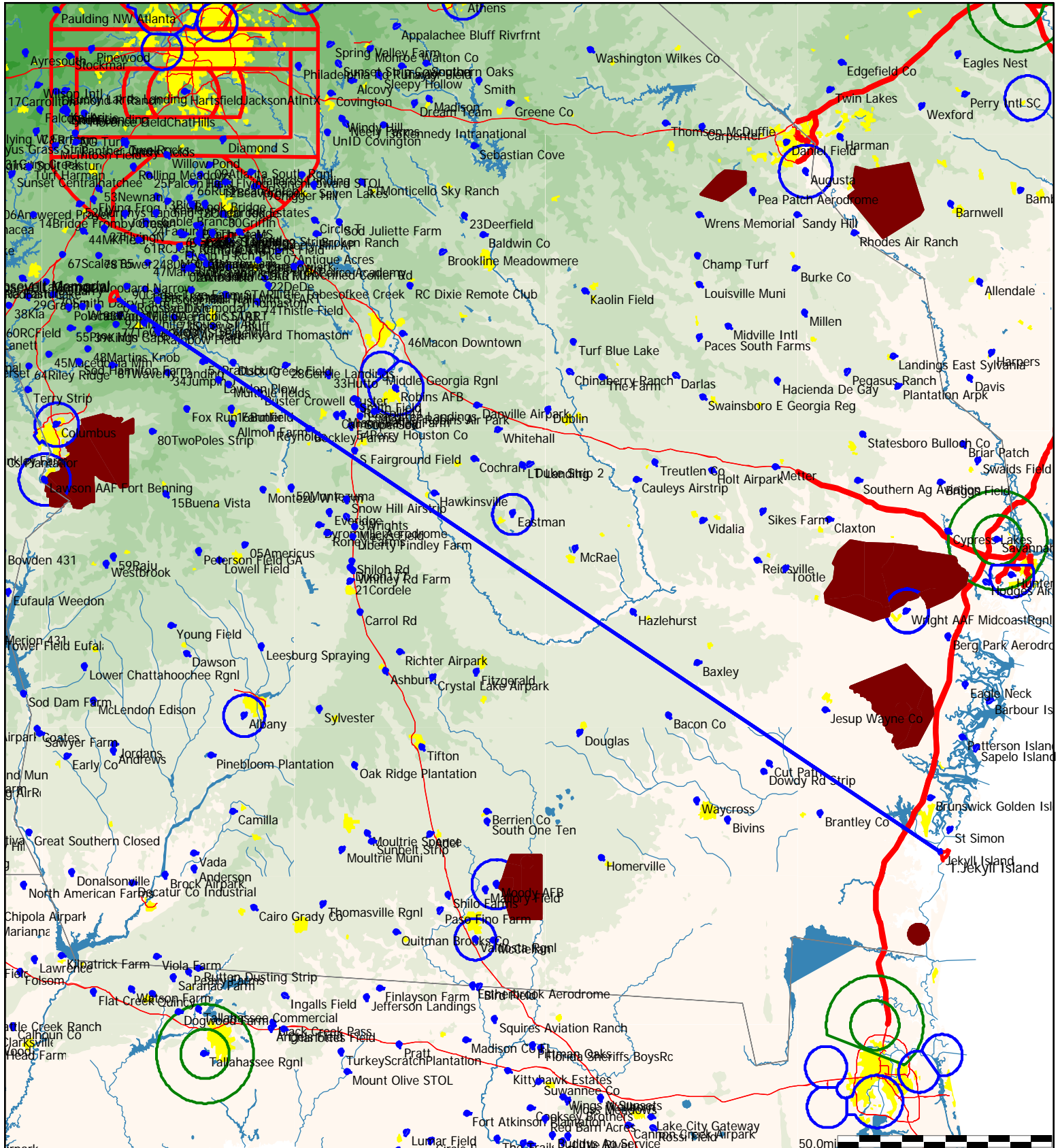
Style	Code	Points	Latitude	Longitude	Dis.	Crs.
Take off	01Rosevl	01Roosevelt Memorial	N32°56'19"	W084°41'47"		
Start	01Rosevl	01Roosevelt Memorial	N32°56'19"	W084°41'47"		
1.Point	Greensbo	Greensboro	N32°40'53"	W087°39'43"	173.5mi	265°
Finish	01Rosevl	01Roosevelt Memorial	N32°56'19"	W084°41'47"	173.5mi	83°
Landing	01Rosevl	01Roosevelt Memorial	N32°56'19"	W084°41'47"		



Type: Out and return [743.2pts]

Task distance: 461.8mi

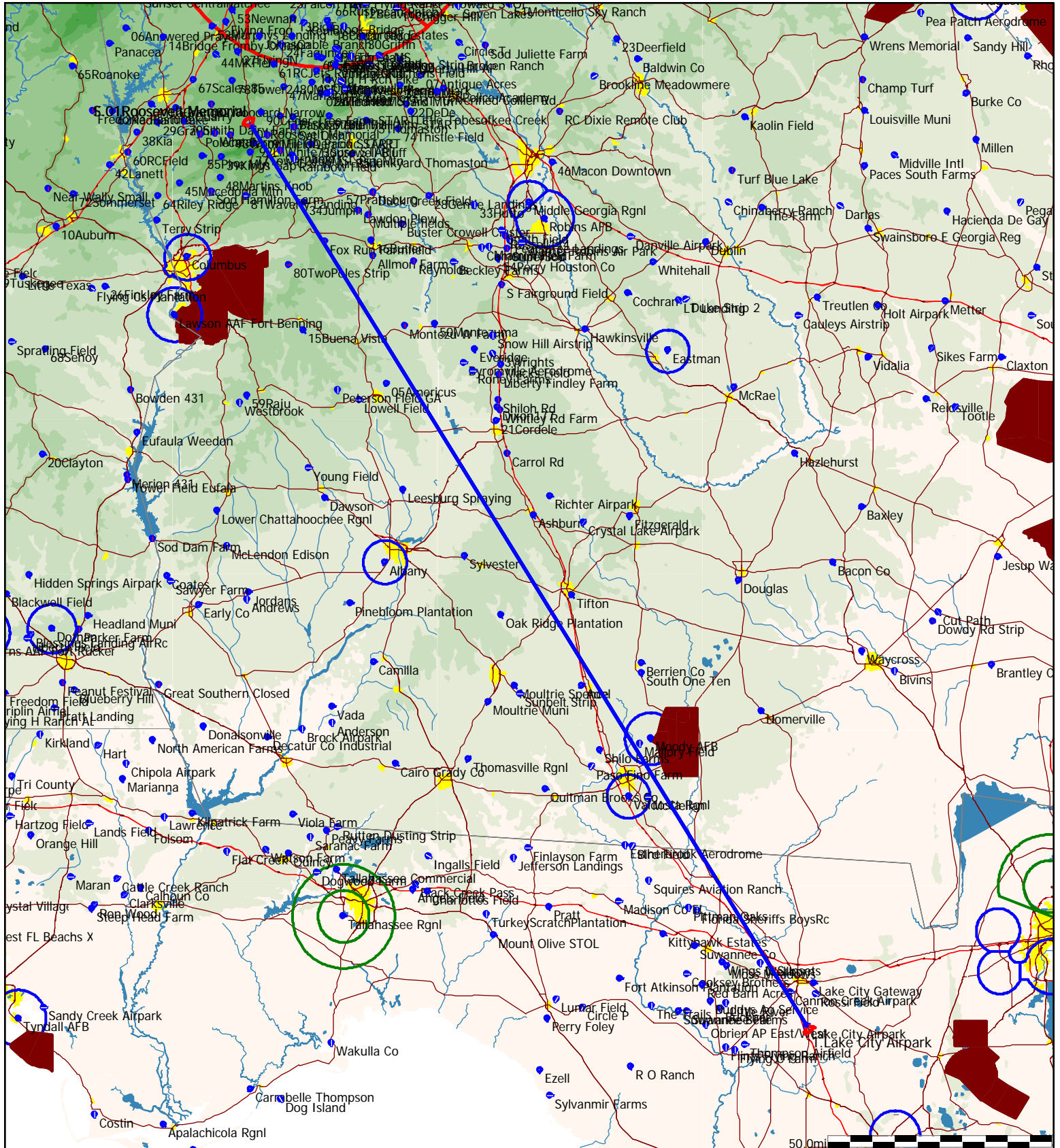
Style	Code	Points	Latitude	Longitude	Dis.	Crs.
Take off	01Rosevl	01Roosevelt Memorial	N32°56'19"	W084°41'47"		
Start	01Rosevl	01Roosevelt Memorial	N32°56'19"	W084°41'47"		
1.Point	Jekyll	Jekyll Island	N31°04'28"	W081°25'40"	230.9mi	123°
Finish	01Rosevl	01Roosevelt Memorial	N32°56'19"	W084°41'47"	230.9mi	305°
Landing	01Rosevl	01Roosevelt Memorial	N32°56'19"	W084°41'47"		



Type: Out and return [755.Opts]

Task distance: 469.2mi

Style	Code	Points	Latitude	Longitude	Dis.	Crs.
Take off	01Rosevl	01Roosevelt Memorial	N32°56'19"	W084°41'47"		
Start	01Rosevl	01Roosevelt Memorial	N32°56'19"	W084°41'47"		
1.Point	LakeCA	Lake City Airpark	N30°02'38"	W082°36'14"	234.6mi	148°
Finish	01Rosevl	01Roosevelt Memorial	N32°56'19"	W084°41'47"	234.6mi	329°
Landing	01Rosevl	01Roosevelt Memorial	N32°56'19"	W084°41'47"		



Type: Out and return [758.8pts]

Task distance: 471.5mi

Style	Code	Points	Latitude	Longitude	Dis.	Crs.
Take off	01Rosevl	01Roosevelt Memorial	N32°56'19"	W084°41'47"		
Start	01Rosevl	01Roosevelt Memorial	N32°56'19"	W084°41'47"		
1.Point	Wiliamsn	Williamson Farm	N30°38'41"	W087°40'10"	235.8mi	229°
Finish	01Rosevl	01Roosevelt Memorial	N32°56'19"	W084°41'47"	235.8mi	47°
Landing	01Rosevl	01Roosevelt Memorial	N32°56'19"	W084°41'47"		

